

DALEY NEWS

Metal Trusses by Daley's

Many of our clients are not aware Daley's is a very experienced truss installer, dating back to our first metal truss project on a tract of metal framed homes in Santa Cruz in 1991. In 2005, our experience grew on the Emeryville Bay Street Condo Project. Currently, we are completing The Crossings in San Bruno, our largest truss project to date and have received compliments from a very satisfied developer and contractor. Contact us for your next metal framed and truss project.



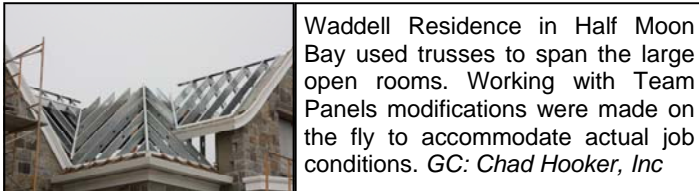
Bay Street in Emeryville: Due to a congested site and the intention to keep the retail stores below open during construction, Daley's set trusses at night. GC: Devcon Construction



The Crossings in San Bruno had nearly 100,000 SF of roof area and a demanding schedule. Working with Team Panels of Denver CO, Daley's was able to get the roof dried in ahead of schedule. GC: SNK Construction



Marriott Courtyard in Campbell used trusses to speed construction of the Porte Cochere. GC: Taisei Construction

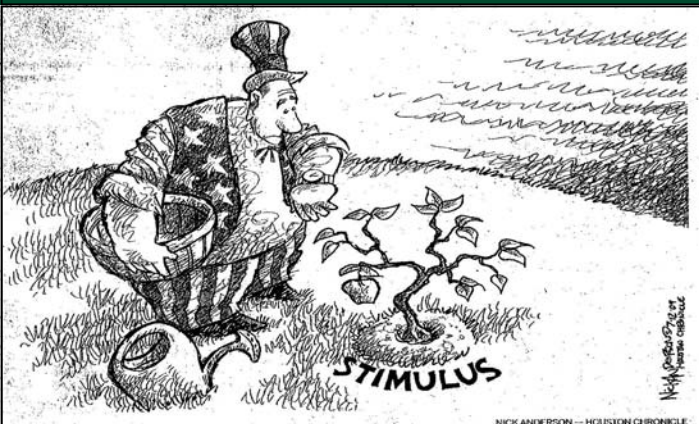


Waddell Residence in Half Moon Bay used trusses to span the large open rooms. Working with Team Panels modifications were made on the fly to accommodate actual job conditions. GC: Chad Hooker, Inc

A Level Above Since 1963

Daley's Drywall & Taping, Inc.
960 Camden Avenue 408-374-7626
Campbell, CA 95008 Fax: 408-378-8965
Lic. #336095 www.daleysdrywall.com

Cartoonist's View



Quote: "The problem with socialism is that you eventually run out of other peoples money"
Margaret Thatcher